

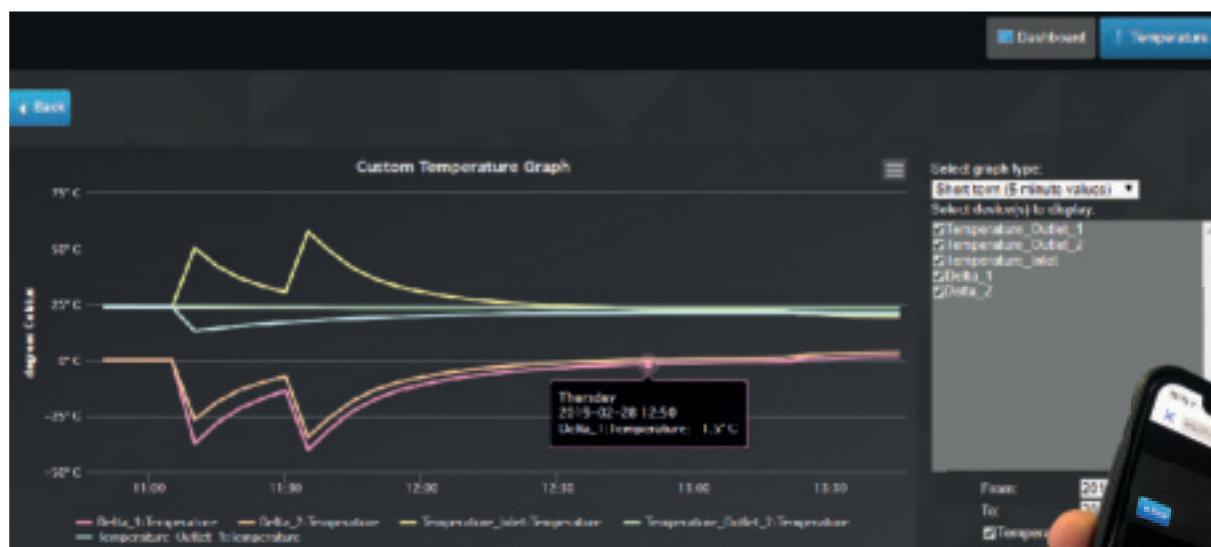
UTES UNDERGROUND THERMAL ENERGY STORAGE MONITORING SYSTEM

WHAT DOES UTES MEAN?

Underground thermal energy storage monitoring, using its own internal WiFi network in real time. UTES is a system recommended for all ground source heat pump installations GSHP, ensuring its continuous temperature measurement. UTES enables optimization of the work of the GSHP, reducing the costs of its use. 24h/7 access to the system, history and statistics. UTES is dedicated to newly designed as well as existing GSHP installations. An uncomplicated installation on indoor manifolds, manifold chambers and manifold cabinets.

HOW TO READ THE UTES DATA?

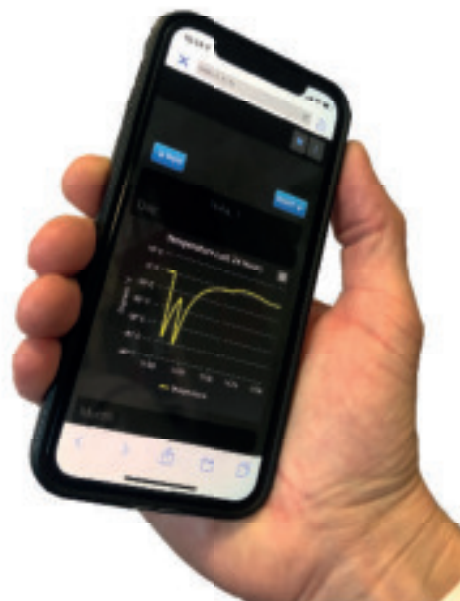
The system does not require installing additional software on stationary or mobile devices. Reading data through a web browser from any place on any device: PC, MAC, Linux, IOS, Android. Immediate configuration using QR codes.



UTES UNDERGROUND THERMAL ENERGY STORAGE MONITORING SYSTEM

PRODUCT FEATURES

Warranty	2 years
Temperature measurement	from -55°C to +125°C
Average power consumption	350 mA
Power supply	100-240VAC
Frequency	50/60 Hz
WiFi module	Standard: WiFi 802.11 b/g/n 2.4 GHz frequency Supports security WPA / WPA2 Range up to 100m in open area Built-in antenna SSID: UTES http://1.1.1.1 IP protocol: DHCP
Installation	The system does not require installing additional software on stationary or mobile devices
Casing material	IP68 Standard
Housing color	grey
The casing dimensions	140 x 125 x 90 mm
Antenna	Built-in
Accuracy	+/- 0,5 °C in the range of -10 °C do 85 °C
Design	Sator



MuoviTech®

MuoviTech Polska Sp. z o.o. Niepołomicka Strefa Przemysłowa, Sektor A ul. Wimmera 31, 32-005 Niepołomice, Polska
Phone +48 123 964 827 Mobile +48 606 134 994 WEB www.muovitech.com